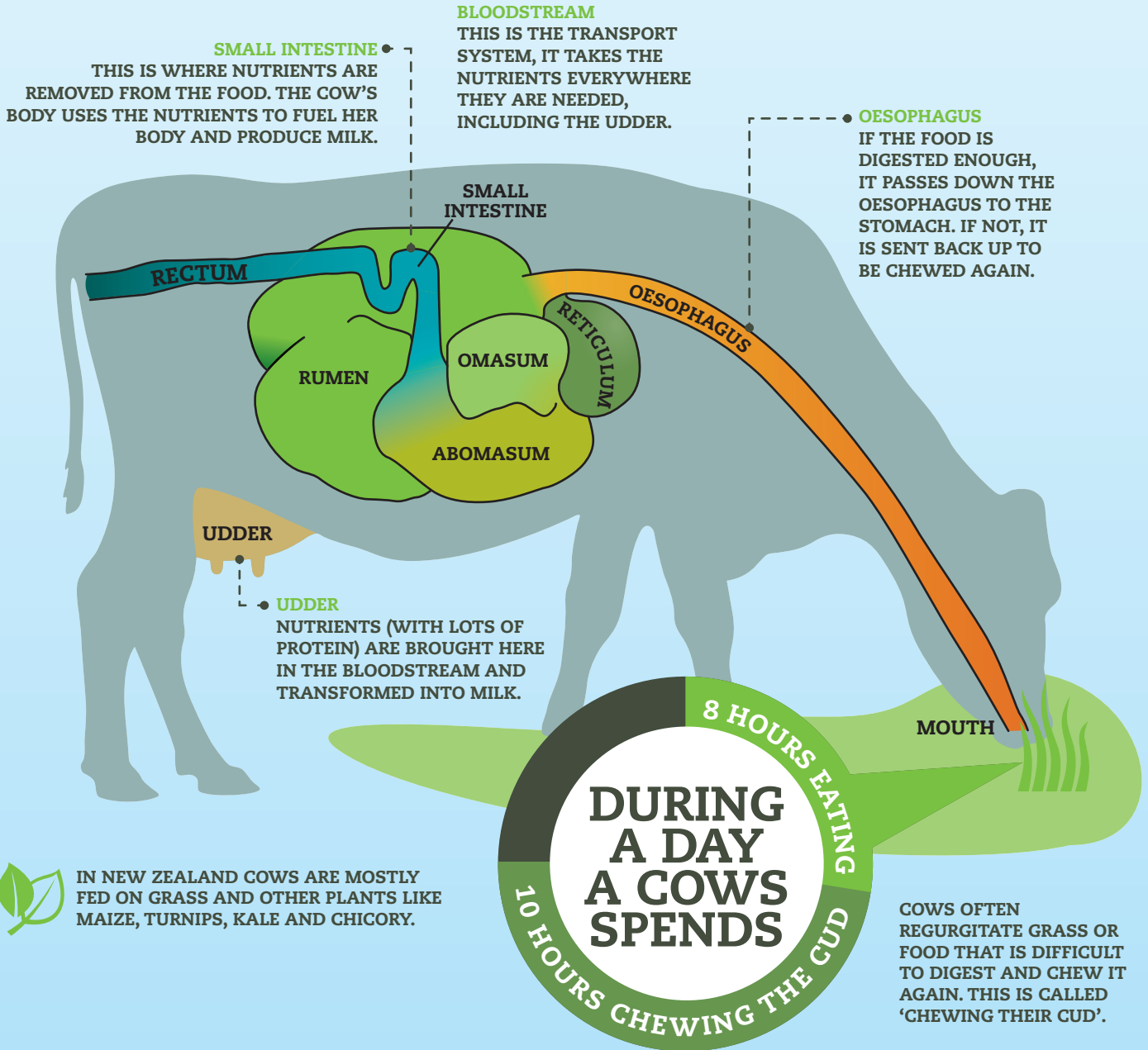



# HOW A COW WORKS



IN NEW ZEALAND COWS ARE MOSTLY FED ON GRASS AND OTHER PLANTS LIKE MAIZE, TURNIPS, KALE AND CHICORY.

## COWS HAVE 4 STOMACHS

- 1 THE RUMEN**  
THE LARGEST STOMACH FILLED WITH RUMEN FLUID. THE MICROORGANISMS IN RUMEN FLUID ALLOW COWS TO EAT PRACTICALLY ANYTHING, EVEN FOODS THAT WOULD KILL OTHER ANIMALS.
- 2 THE RETICULUM**  
THIS STOMACH IS WHERE THE CUD IS FORMED. SMALL PARCELS OF FOOD ARE COMPACTED AND SENT BACK THROUGH THE RUMEN TO THE MOUTH FOR CHEWING.


  - THE RETICULUM CATCHES OBJECTS LIKE NAILS OR WIRE THAT THE COW MIGHT HAVE SWALLOWED. THESE OBJECTS STAY IN THE RETICULUM FOR THE REST OF THE COW'S LIFE.
- 3 THE OMASUM**  
THIS STOMACH IS A FILTER FOR THE FINAL STOMACH. IT HAS LOTS OF LEAFY FOLDS LIKE A BOOK. SMALL PARTICLES GO THROUGH THE FOLDS BUT BIG ONES ARE PASSED BACK TO THE RETICULUM.
- 4 THE ABOMASUM**  
THIS STOMACH IS THE MOST LIKE A HUMAN STOMACH. ACID AND ENZYMES BREAK DOWN THE FOOD AND SEND IT THROUGH TO THE SMALL INTESTINE.